

HARRY CHARLES

Property Specialists



Savanna Court, Watford, WD18 7LP

Price £215,000



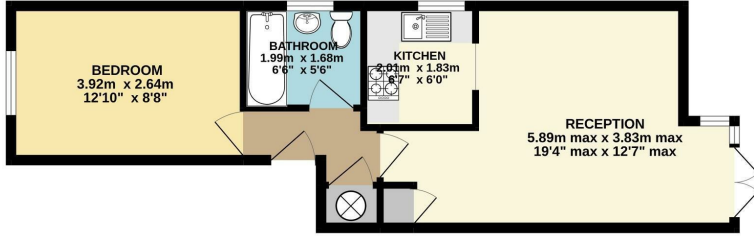
**** GROUND FLOOR ONE BEDROOM APARTMENT - LIVING ROOM - SEPARATE KITCHEN- DOUBLE BEDROOM - BATHROOM - COUNCIL TAX BAND C - ALLOCATED PARKING - NO UPPER CHAIN ****A well presented one double bedroom ground floor apartment situated in this private apartment block with off street parking, communal gardens and easy access to both Watford town centre and the Metropolitan line. The property benefits from double glazing and the property offers direct access onto the well maintained communal gardens at the rear. In order to avoid disappointment, please contact us without delay to arrange an early appointment to view.

- Ground Floor Apartment
- Separate Kitchen
- Bathroom
- Council Tax Band C
- No Upper Chain
- Living Room With Access Onto Communal Garden
- Double Bedroom
- Communal Gardens
- Allocated Parking



Floor Plan

GROUND FLOOR
39.9 sq.m. (429 sq.ft.) approx.

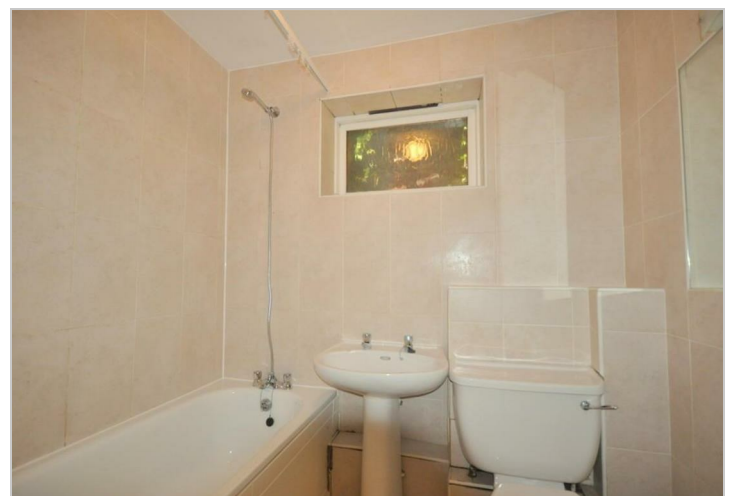
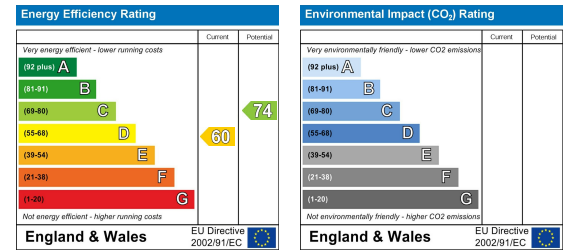


SAVANNA COURT
TOTAL FLOOR AREA: 39.9 sq.m. (429 sq.ft.) approx.
While every attempt has been made to ensure the accuracy of the floorplan contained here, measurements of doors, windows, rooms and any other items are approximate and no responsibility is taken for any error, omission or misstatement. This plan is for illustrative purposes only and should be used as such by any prospective purchaser. The services, systems and appliances shown have not been tested and no guarantee as to their operability or efficiency can be given.
Made with Metropac ©2022

Area Map



Energy Efficiency Graph



These particulars, whilst believed to be accurate are set out as a general outline only for guidance and do not constitute any part of an offer or contract. Intending purchasers should not rely on them as statements of representation of fact, but must satisfy themselves by inspection or otherwise as to their accuracy. No person in this firm's employment has the authority to make or give any representation or warranty in respect of the property.